

# ■ CRISTINA<sup>75</sup>°

RUBINETTERIE

## Cristina H2O+ Kitchen Filter Mixers



The new **Cristina H2O+** collection, designed by the **CRISTINA Design Lab**, redefines the concept of kitchen faucets with filtering mixers: these innovative products combine elegant design, advanced technology, and environmental commitment, offering filtered, fresh, and sparkling water directly from the tap.



The **KT455 kitchen filter mixer** won the "**Sustainable Award 2024**" at the Archiproducts Design Award. This award represents a significant affirmation of our sustainable approach to making a difference with a simple daily gesture.



FROM YELLOW TO GREEN

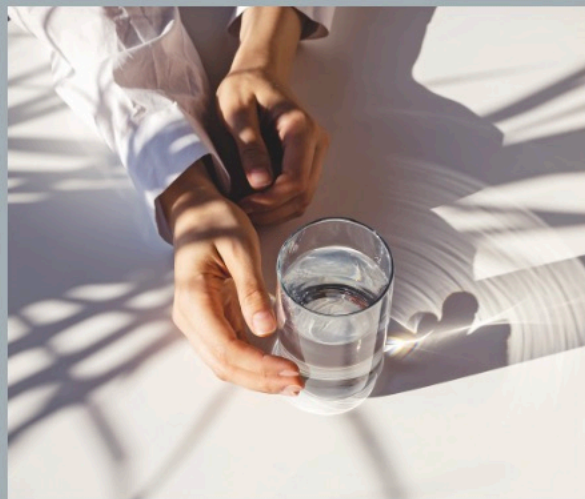
# THE TRUE COST OF PLASTIC BOTTLES



## The environmental impact of plastic water bottles is alarming.

Every minute, over a million plastic bottles are purchased worldwide, of which only 9% are recycled. A single plastic bottle can take **up to 450 years to fully decompose**, releasing harmful microplastics into the ecosystem in the meantime. Moreover, the production of plastic bottles requires around **17 million barrels of oil per year**, significantly contributing to greenhouse gas emissions. With **Cristina H2O+**, we offer a **concrete solution to this problem**.

Our KT450 and KT455 filter mixers transform tap water into high-quality water - natural, fresh or sparkling - eliminating the need to buy plastic bottles.



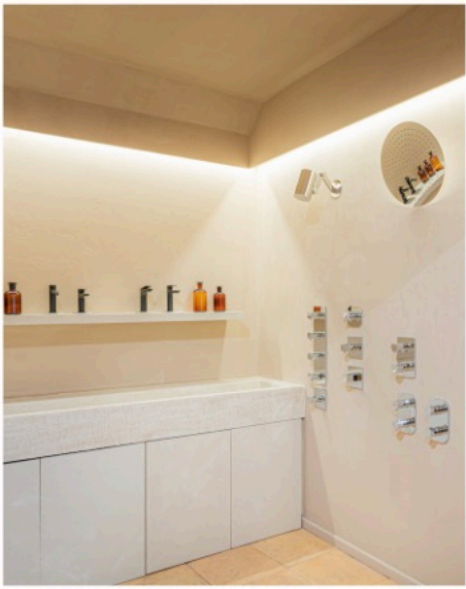
An average family that consumes 1000 liters of bottled water per year can avoid the use of about 2000 plastic bottles by choosing **Cristina H2O+**. This not only drastically reduces plastic waste in our homes, but also helps to decrease the CO2 emissions associated with the production and transportation of bottled water, which can reach up to 500 grams of CO2 per liter of bottled water. By choosing **Cristina H2O+**, every family can make a difference for our planet with a simple daily gesture, contributing to a more sustainable future and significantly reducing their ecological footprint.



## Between Architecture and Literature: Our November Journeys



**THE EXCELLENCE OF DESIGN AT THE HEART OF ROME**, HDC - Hub Design Coronari is born. A new reality that, from the center of Rome, will spread the excellence of Italian design around the world. In this space, two prestigious brands collaborate for the first time: **GSI Ceramica** and **CRISTINA Rubinetterie**, internationally renowned. The Hub will offer B2B consultancy for high-quality design, based on solid experience and open to innovation. The opening, at the end of October, took place in a unique location: Piazza di S. Salvatore in Lauro n. 3, in the historic heart of Rome. "Conceived beyond the boundaries of the traditional showroom - declares Daniele Mazzon, General Manager of CRISTINA Rubinetterie - the HDC space, of which we will be a part, is configured as a work environment reserved for architects and designers, for a dedicated consultancy support, in order to adequately respond to all design needs, even the most specific ones".



Our **CRISTINA Brera showroom** in Milan hosted the presentation of the book "**Triei**" by the architect and writer **Alessandro Romito**. During the evening, dedicated to crime fiction, the participants discovered the creative process behind this award-winning work, set in the heart of Sardinia.

The novel has **received prestigious awards**, including the Critics' Prize at the Premio Nazionale Caffè delle Arti. The evening ended with a pleasant convivial moment, further enhancing the event.



On November 13 and 14, Cristina Rubinetterie participated in **Architect@Work Milan**, presenting our latest innovations to industry professionals.



# Metamorfosi in Florence

This month, we take you to Florence, where **architect Cristina Massimino** has realized "**Metamorfosi**". The project transforms a traditional apartment using double-sided cabinets as partition walls, redefining the spaces and optimizing natural light.

The kitchen, now part of a larger living area, and the sleeping area reflect a careful consideration of energy efficiency. Selected materials and custom cabinetry, made by local artisans, give the project a simple and authentic elegance.

